

Getting Started with Your IMAQ™ System

Complete the following steps to install NI-IMAQ with your IMAQ device.

1. Install the NI-IMAQ software. Follow the directions in the *NI-IMAQ Release Notes* to install your software.
2. Install your IMAQ hardware and connect your camera. Follow the instructions in your hardware documentation to install your IMAQ device.

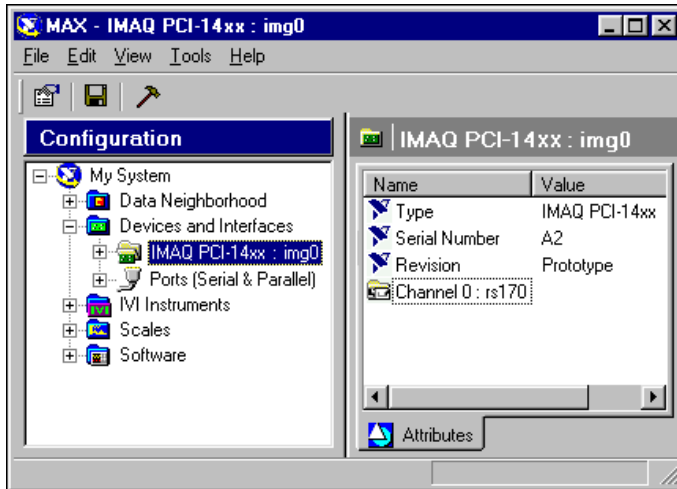
For more information about installing NI-IMAQ for LabVIEW Real-Time, refer to Appendix C, *NI-IMAQ for LabVIEW Real-Time*, in your *NI-IMAQ User Manual*.



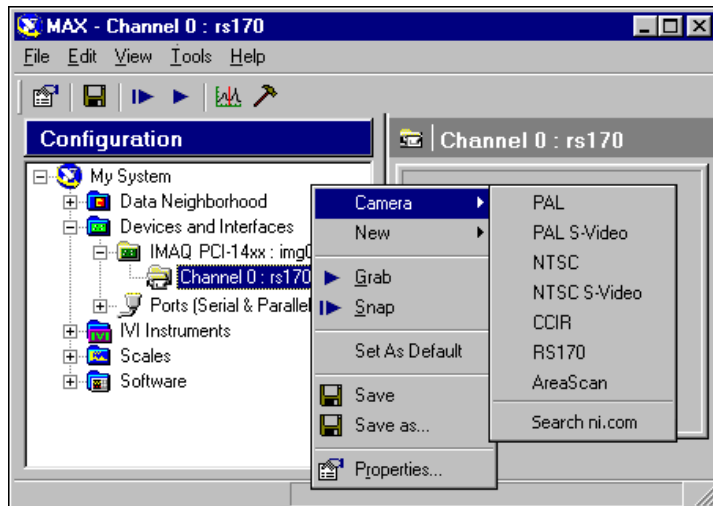
Caution Turn the power off and unplug your computer before installing your hardware. Wait for any motherboard LEDs to power off before proceeding, since some computers remain powered for some time after being unplugged.



3. Run Measurement & Automation Explorer (MAX) and the NI-IMAQ diagnostics.
 - a. Double-click the MAX icon on your desktop. You can use MAX to modify camera properties. Once you have saved these properties, they become your default settings for all NI-IMAQ applications.
 - b. Click the plus sign next to **Devices and Interfaces** to reveal a list of your installed IMAQ devices.



- c. Click once on the IMAQ device you want to test. Click the **Diagnostic** button on the toolbar to open the diagnostics window. Click the **Run Tests** button to run the diagnostics.
 - d. Click the **Properties** button on the toolbar to view or modify the interface file.
4. Select a camera file and acquire an image.
- a. Click the plus sign next to your IMAQ device to expand the menu tree and list the available channels.



- b. Choose the appropriate camera type from the list. Camera type selection varies according to which IMAQ device is installed.
- c. Right-click the channel to obtain a list of cameras.
- d. Select the camera and click the **Properties** button on the toolbar to view or modify the camera file.
- e. Click **Snap** on the toolbar to acquire your first image.
- f. Click **Grab** on the toolbar to acquire images continuously. A grab allows you to focus your camera.



Note For a complete list of supported cameras, right-click the channel, select **Camera**, and click **Search ni.com**.

IMAQ™, LabVIEW™, National Instruments™, NI™, ni.com™, and NI-IMAQ™ are trademarks of National Instruments Corporation. Product and company names mentioned herein are trademarks or trade names of their respective companies. For patents covering National Instruments products, refer to the appropriate location: **Help»Patents** in your software, the `patents.txt` file on your CD, or `ni.com/patents`.

© 1998–2003 National Instruments Corp. All rights reserved.



322161C-01

Jun03